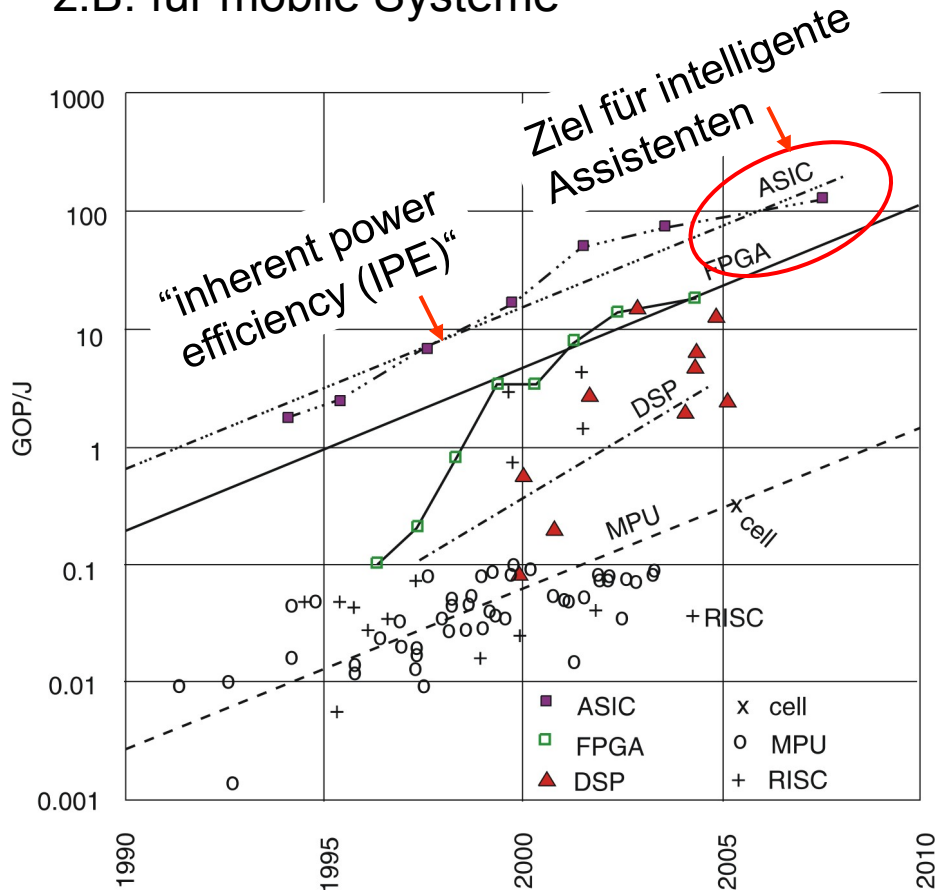


Zukünftige Ausführungsplattformen: Nur eine Handvoll von Architekturen?

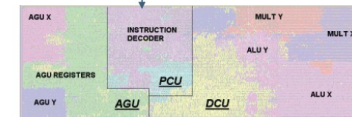
Energieeffizienz harte Beschränkung,
z.B. für mobile Systeme



© Hugo De Man/Philips, 2007

Unkonventionelle Architekturen kommen
IPE sehr nahe

Retargetable C compiler

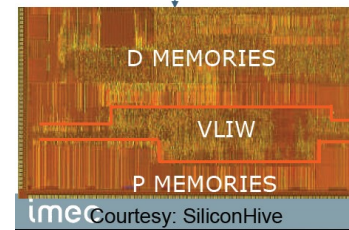


Courtesy: Philips-Target Compilers

Coolflux Audio ASIP

130 nm 0.9V 0.32mm² 24bit
2.0 mW MP3 incl. SRAMs
42 MOPS/mW (~1/4 IPE)

Retargetable C compiler

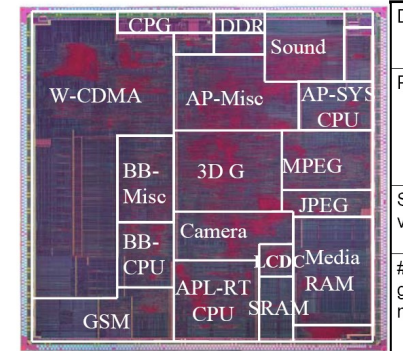


imec Courtesy: SiliconHive

41 Issue VLIW for SDR

130 nm 1.2V 6.5mm² 16 bit
30 operations / cycle (OFDM)
150 MHz 190mW (incl SRAMs)
24 GOPS/W (~ 1/5 IPE)

SH-MobileG1: Chip Overview



Es wird
viele, ggf.
heterogene
Architekturen
geben

© Renesas, MPSoC'07